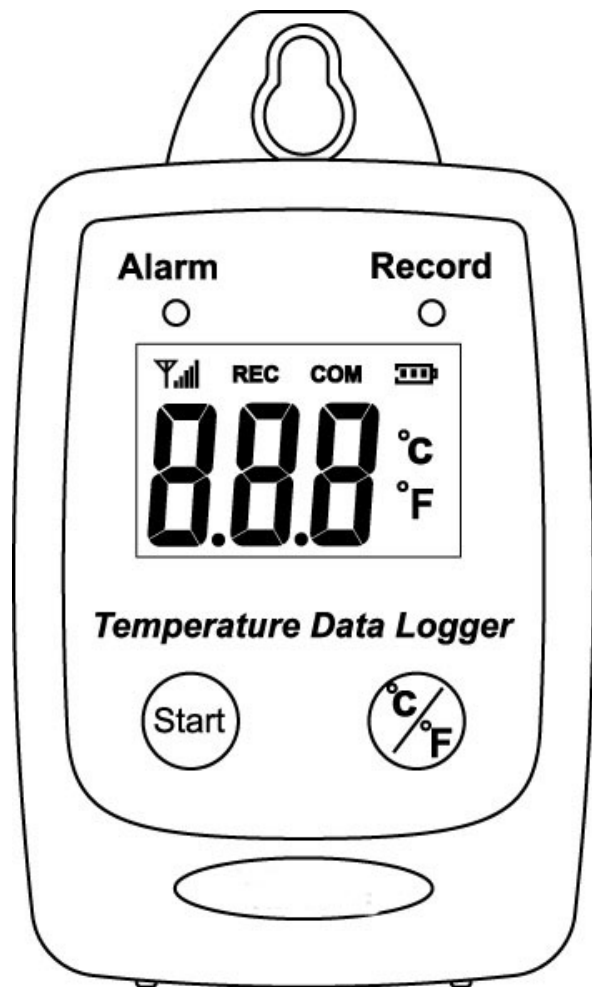


Temperature Datalogger

IP 54 Water Proof USB Datalogger



Users Manual

TABLE OF CONTENTS

FEATURES & SPECIFICATIONS	3
APPLICATIONS	4
START UP AND GENERAL OPERATION	5
LCD Display.....	5
Turn On Temperature Data Logger.....	6
Switch between °C or °F.....	7
Recording Data.....	8
PC SOFTWARE INSTALLATION.....	11
USING PC SOFTWARE.....	12
Setup Screen.....	15
Download Records	17
Graphic & Chart Analysis	20
Data in Listing Format	22
Data Export.....	24

FEATURES & SPECIFICATIONS

Features

- Measure °C/°F Temperature
- Datalogging- 50,000 records
- Fast USB download
- Easy- to-Use PC software for parameter settings and data analysis
- Internal Temperature alarm

Specifications

Temperature

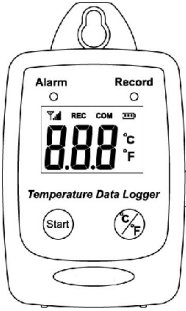

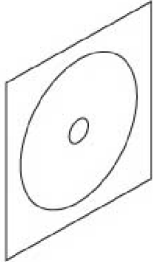
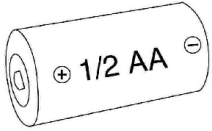
Type	Thermistor
Measurement Range	-40 to 85°C(-40~185°F)
Accuracy	±1.2°F(0.6°C) from -4 to 122°F(-20 to 50°C) ±1.8°F(1.0°C) all other ranges
Resolution	0.1°C

- Display : 3 digit LCD.
- LED status: red LED of Alarm, green LED of Record.
- Sampling rate: 1 times/3 second.
- Battery : One 3.6V ½ AA lithium battery
- Battery Life :1 year.
- External Power Supply: 5 VDC with 0.5A.
- Operating temperature and humidity : -40 to 85°C(-40~185°F), 0-95%,RH,non-condensing.
- Instrument dimensions :83(L)*60(W)*24(H) mm.
- Weight : About 77g.

Applications

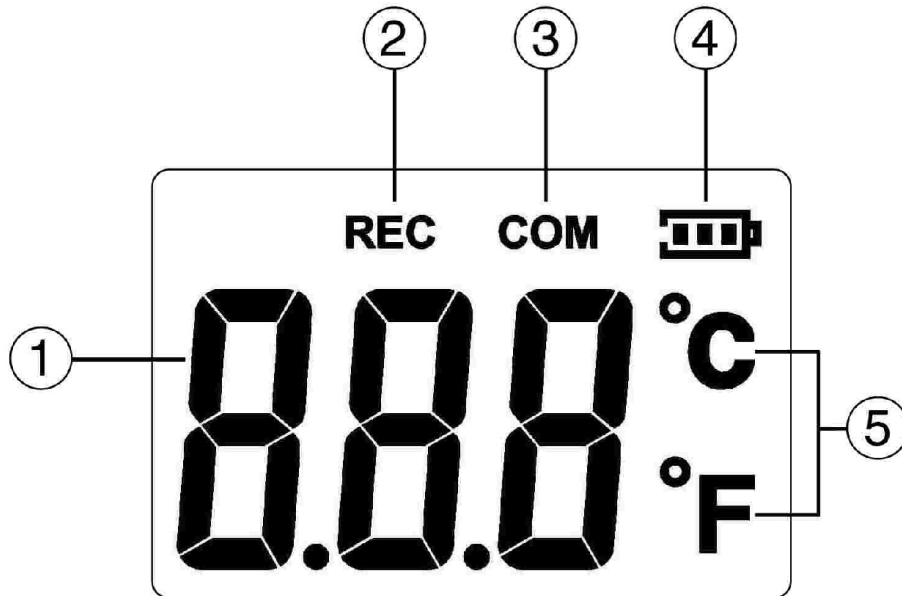
- Building HVAC monitoring.
- Warehouses.
- Refrigerator.
- Clean rooms.
- Freezer.
- Shipping vans.
- Shipping crates.
- Cargo vessels.
- Storage areas.

WHAT'S IN THE BOX

 A handheld temperature data logger with a digital display showing '8.88'. The display also shows '°C' and '°F' units. The device has buttons for 'Alarm', 'Record', 'Start', and a temperature unit selector. The text 'Temperature Data Logger' is printed on the front.	 A standard USB-A to USB-B cable with a coiled section in the middle.	 A CD-ROM disc shown at an angle.
1. Main Unit	2. USB Cable	3. Installation Disk
 A standard AA battery with a '+' sign on the left end and a '-' sign on the right end. The text '1/2 AA' is printed on the side.		
4. 1/2 AA Battery		

START UP AND GENERAL OPERATION

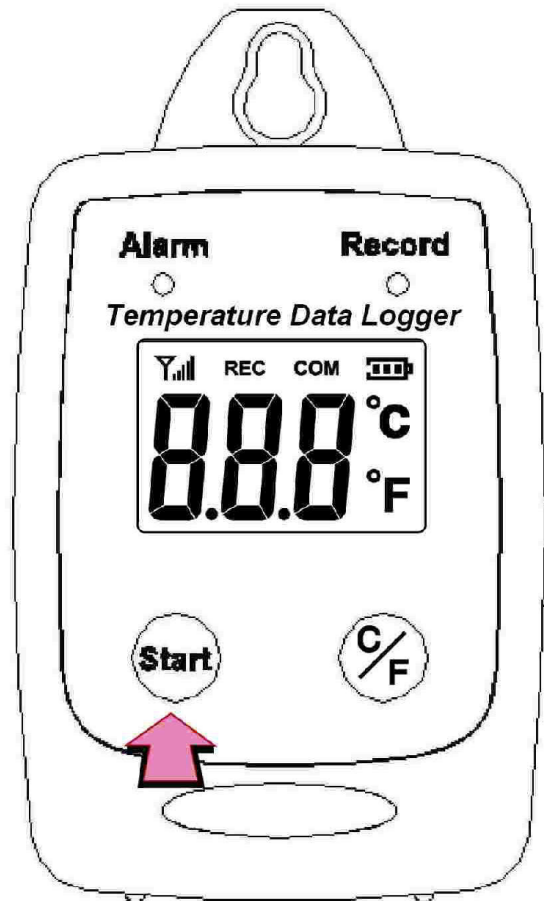
LCD Display



1.	Temperature Display	4.	Battery Level Indicator
2.	Recording	5.	Unit of Measurement
3.	USB Communication		

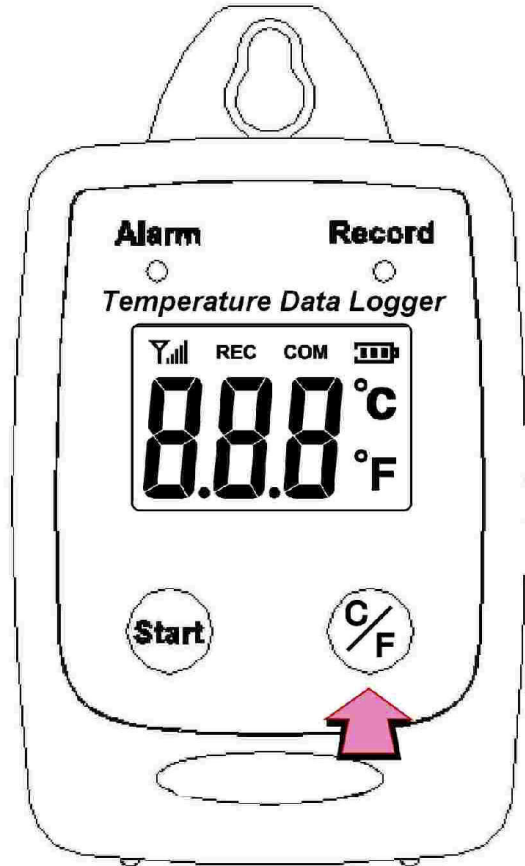
Turn On Temperature Data Logger

- Press the Start button for 2 seconds to turn on the Temperature Data Logger.
- The unit is ready to use.



Switch between °C or °F

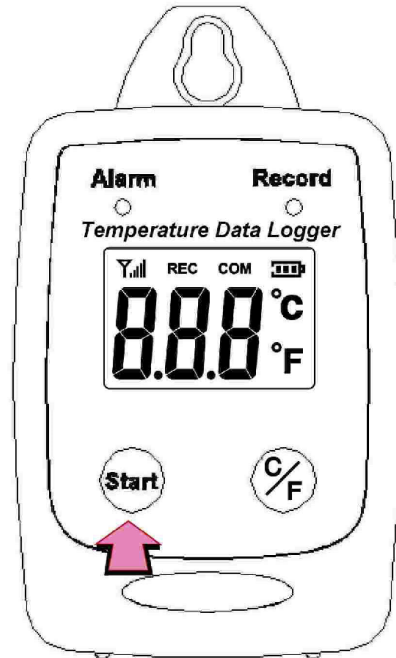
- Press °C/°F to switch between °C or °F



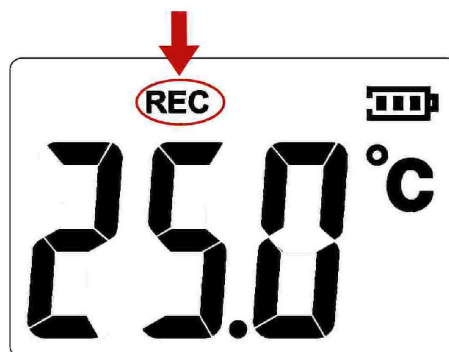
<p>The LCD display shows "25.0" followed by "°C". A red arrow points to the "°C" symbol.</p>	<p>The LCD display shows "25.0" followed by "°F". A red arrow points to the "°F" symbol.</p>
Display current Temperature(°C)	Display current Temperature.(°F)

Recording Data

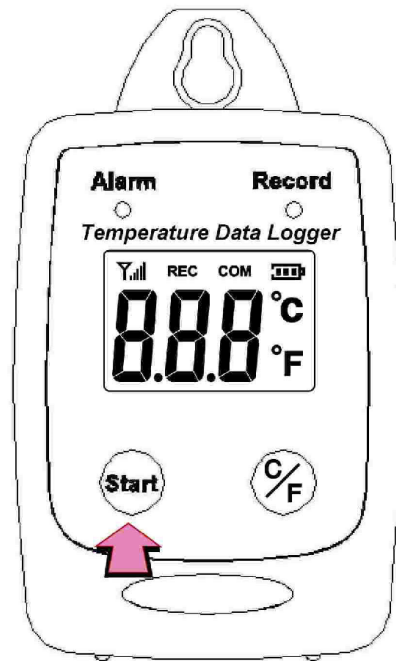
- Press the Start button to start data recording.



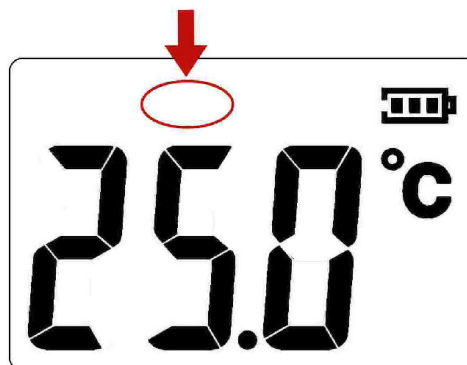
- The LCD display will display REC and the LED green light twinkle when the **Temperature Data Logger** is recording.



- Press the Start button again to stop recording.



- When recording stopped, the REC will disappear.



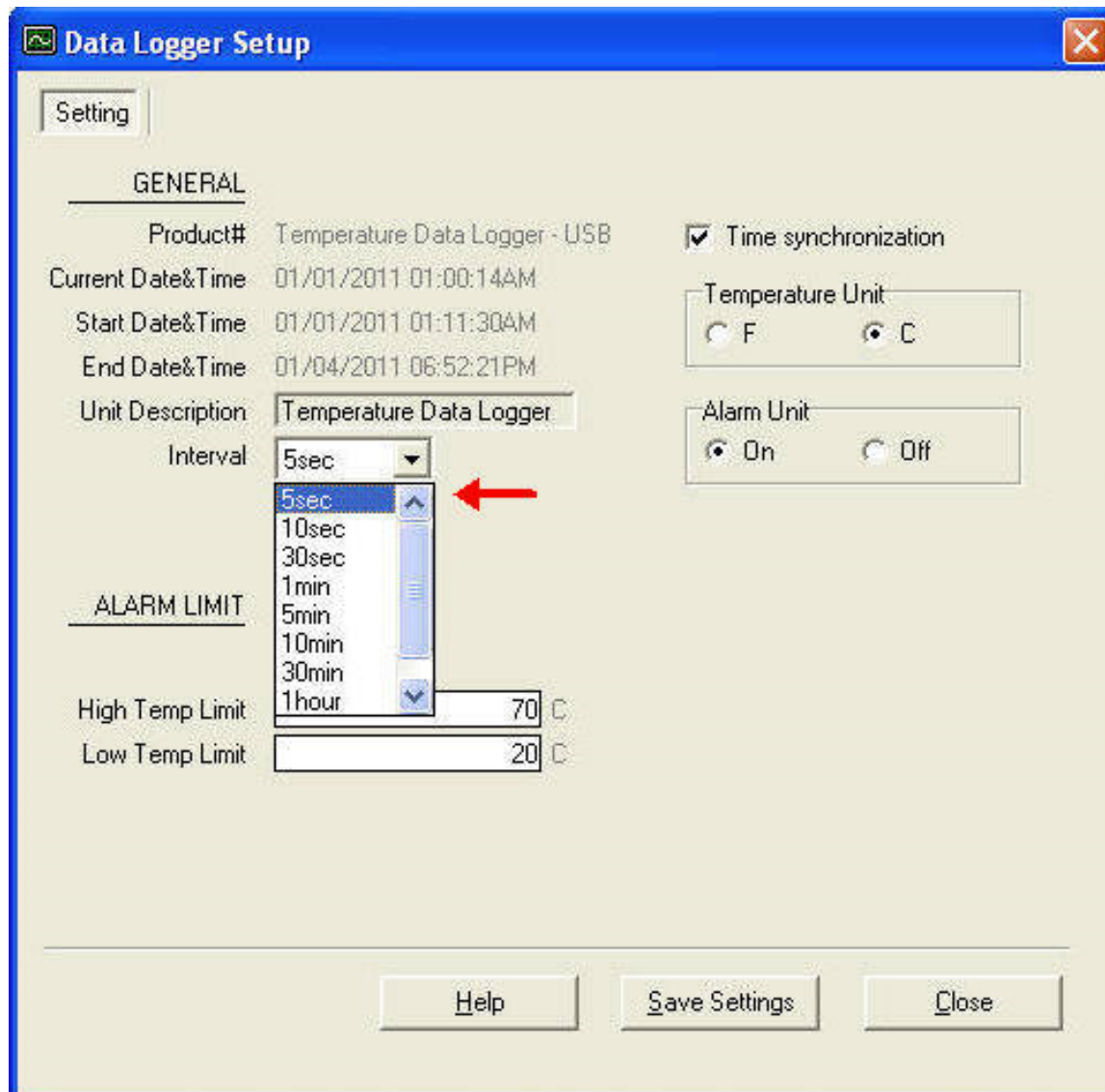
Sampling rate

(5sec / 10sec / 1min / 5min / 10min / 30min / 1 hour)

Data sampling rate can only be set from PC setup screen.

Select the time interval from the drop-down menu.

Click “Save Settings” to save the setting.



PC SOFTWARE INSTALLATION

Installation Requirements:

Minimum system requirements for the software:

-Pentium III - 500 MHz processor or equivalent with 128 megabytes of RAM.

Optimal Performance:

-Pentium 4 - 2.8 gigahertz processor or equivalent with 256 megabytes or RAM.

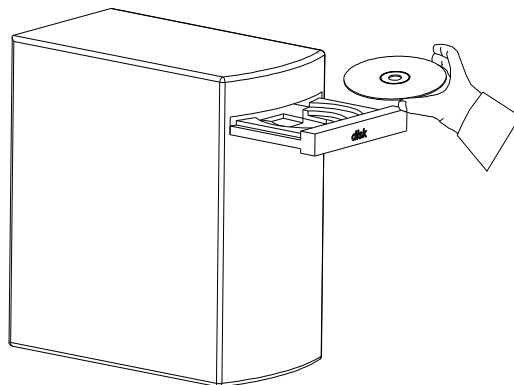
Operating System Requirements:

-Windows 2000

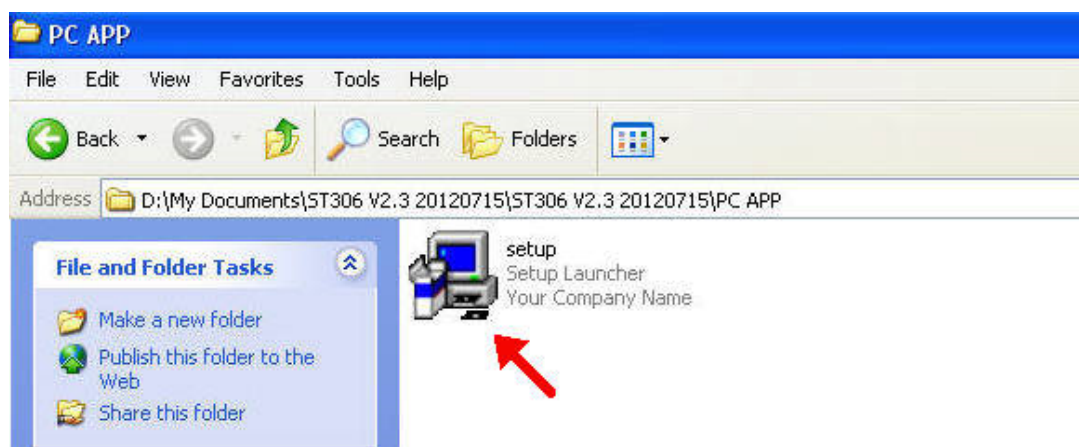
-Windows XP

-Window 7

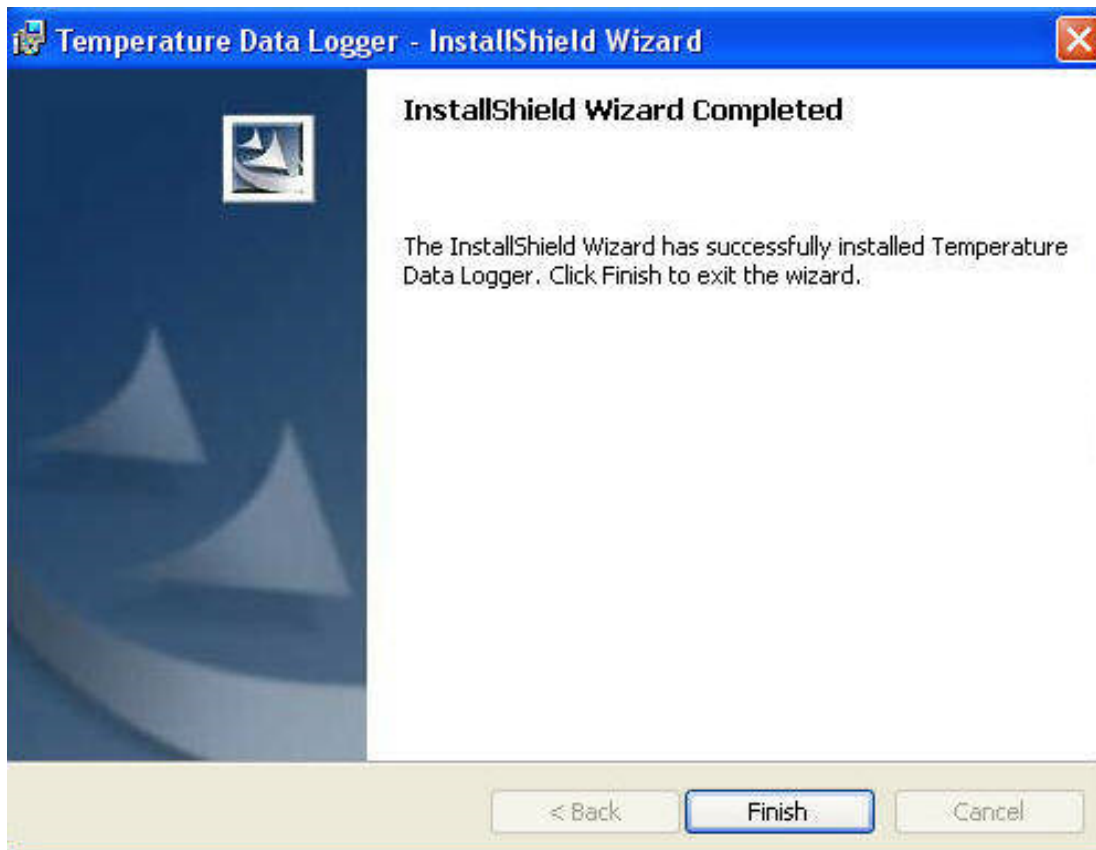
- Insert the CD into the disk drive.



- Click Setup to start installation.



Follow the steps on the Installation Shield Wizard and click Finish to complete the installation.

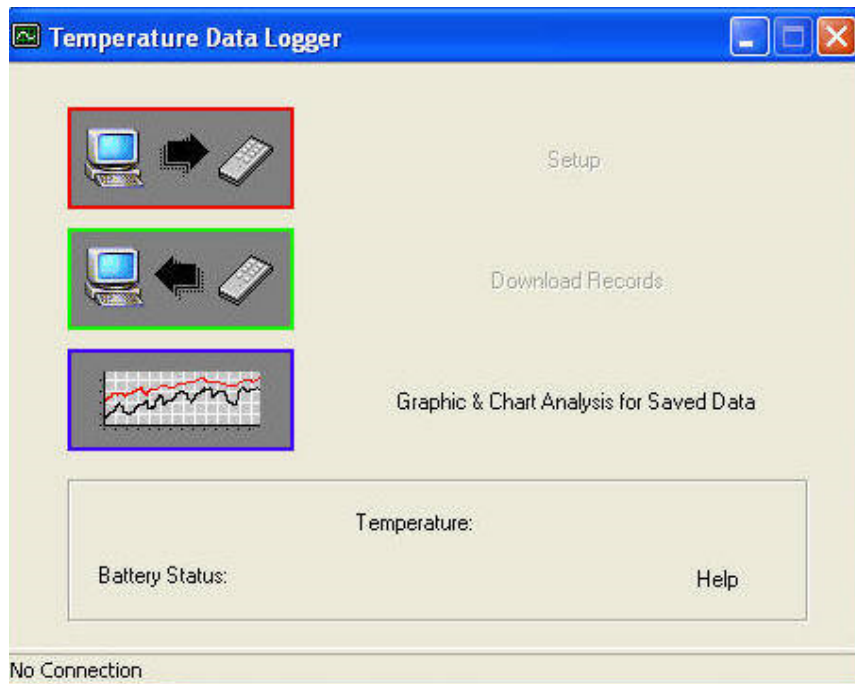


USING PC SOFTWARE

- Start Window PC software.
- Click on All programs, Click on "Temperature Data Logger"
- Click on STLogger to start the datalogger program.

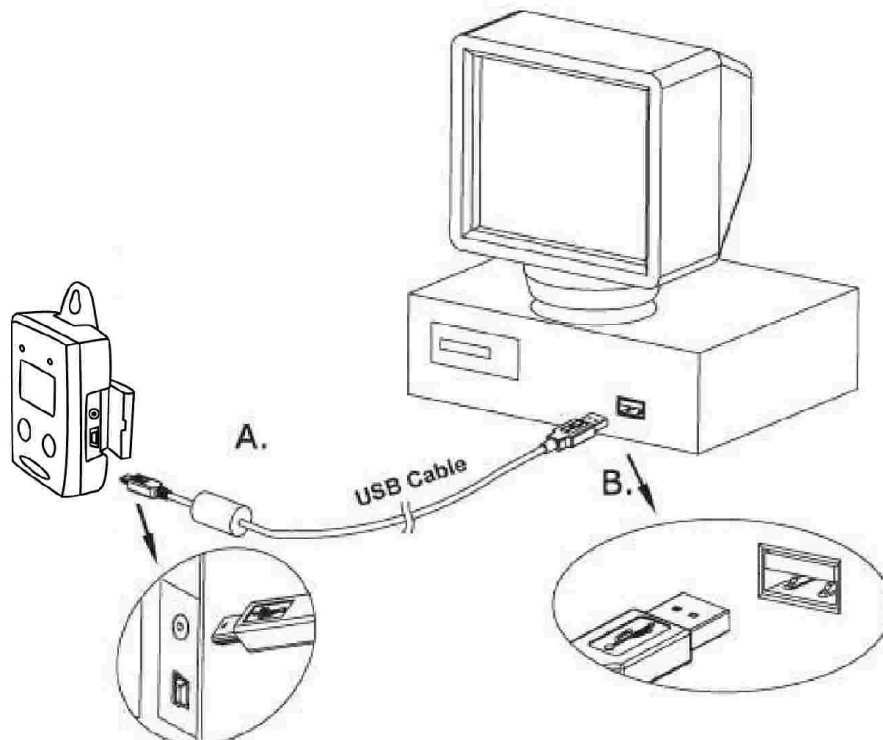


Connection Status

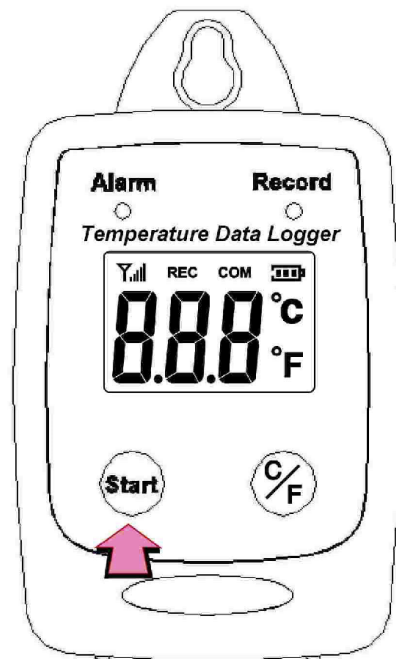


No Connection Screen

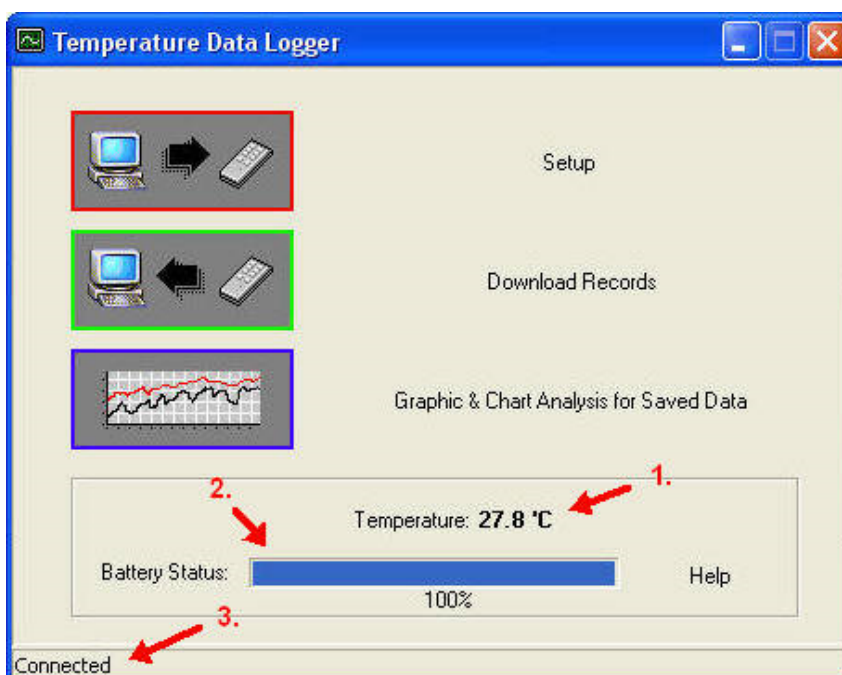
- Connect **Temperature Data Logger** to the PC with a USB cable.



- Press Start for 2 seconds to turn on Temperature Data Logger. **Temperature Data Logger** is now connected to the PC.



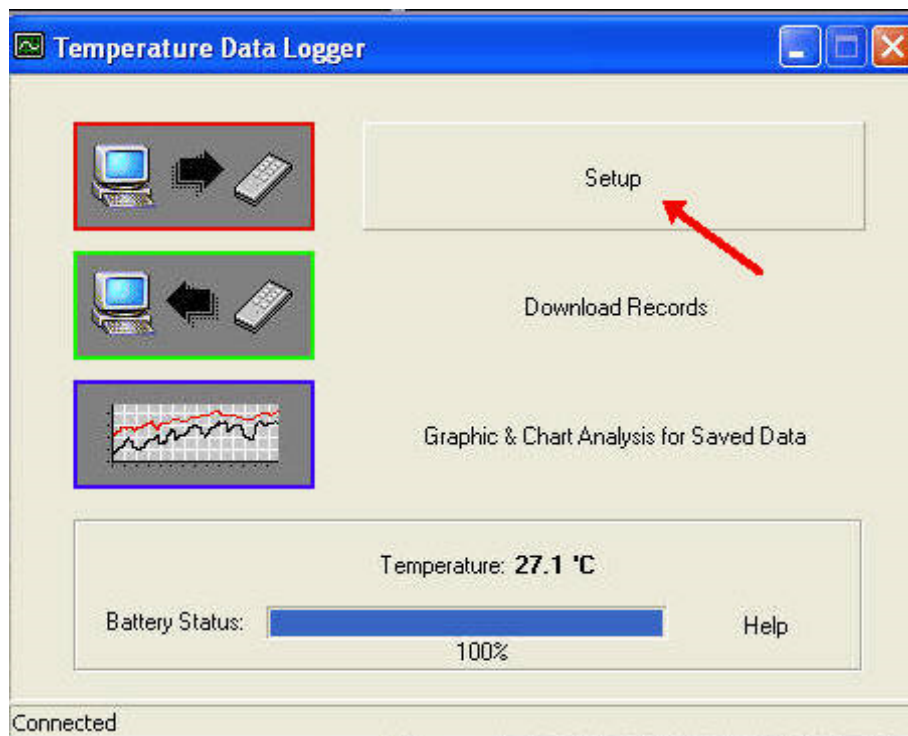
- If the datalogger is properly connected, these three values will show up.
 1. Temperature Reading
 2. Battery Status
 3. Display “Connected”



Connected Screen

Setup Screen

Click "Setup" to enter the Setup screen.



- The values in the white area can be changed by the user.
- The value in the grey area can not be changed by the user.
- Click “Save Settings” to save the values to the datalogger.

Data Logger Setup

Setting

GENERAL

Product# Temperature Data Logger - USB Time synchronization

Current Date&Time 01/01/2011 01:06:56AM

Start Date&Time 01/01/2011 01:11:30AM

End Date&Time 01/04/2011 06:52:21PM

Unit Description Temperature Data Logger

Interval 5sec

Temperature Unit
 F C

Alarm Unit
 On Off

ALARM LIMIT

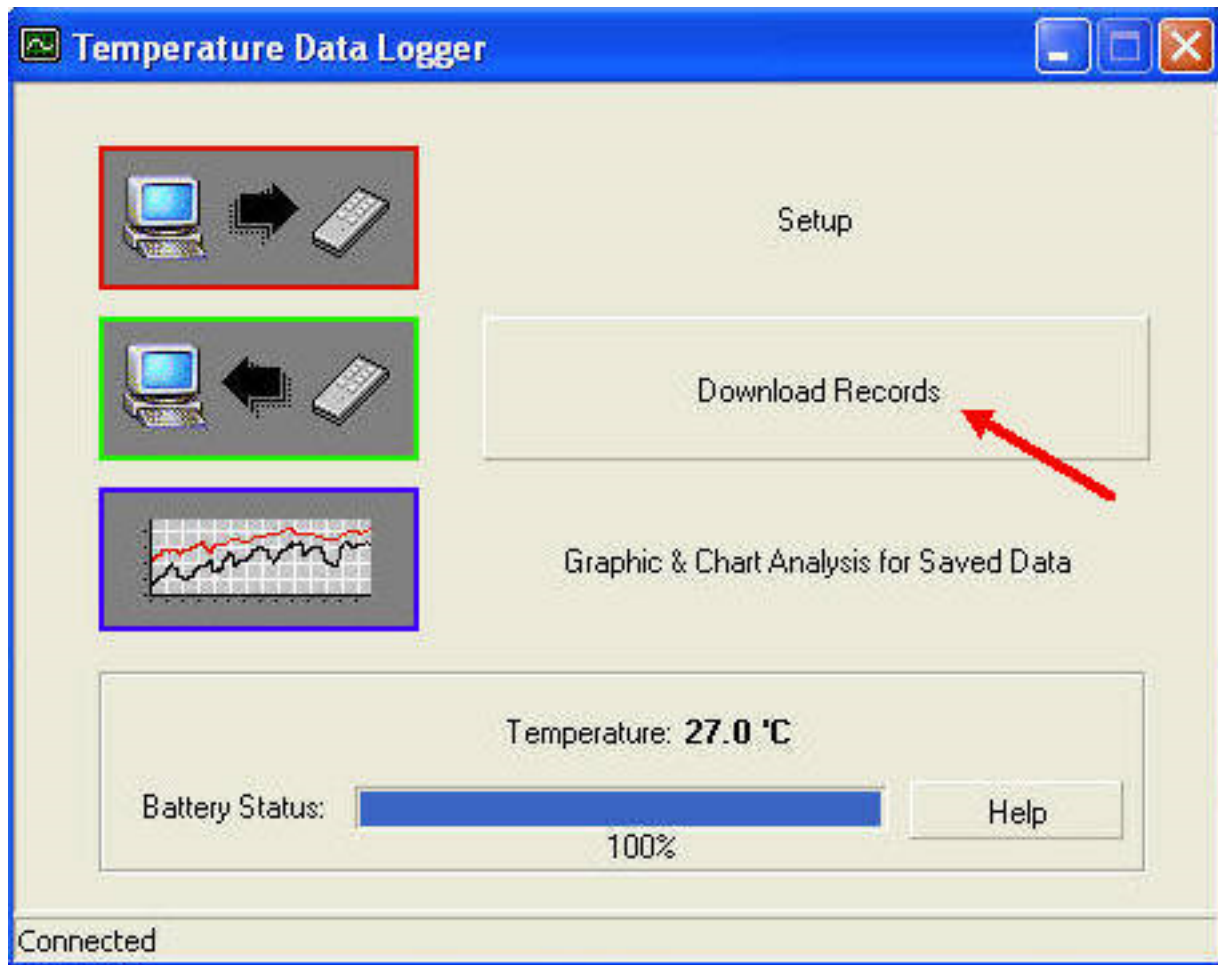
High Temp Limit 70 C

Low Temp Limit 20 C

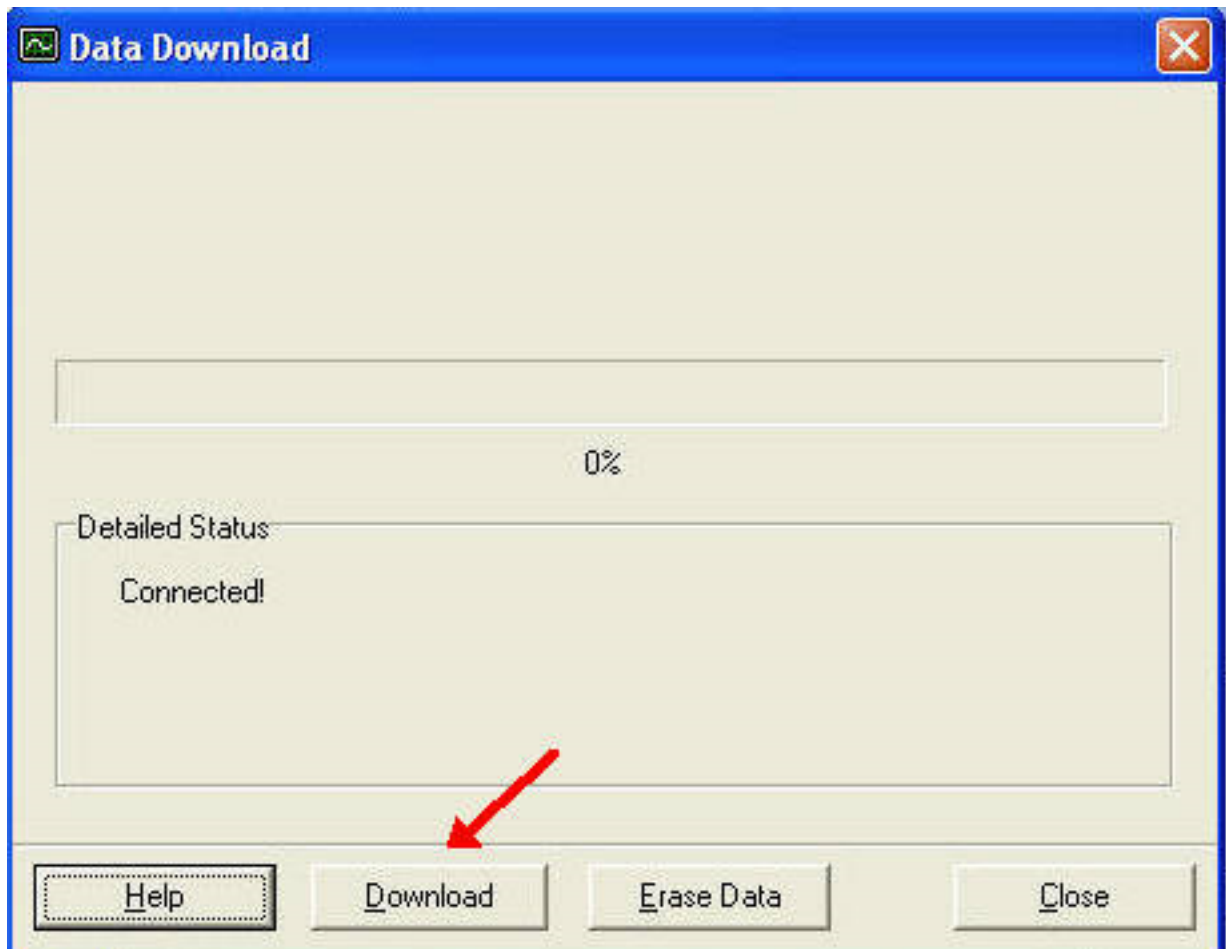
Help Save Settings Close

Download Records

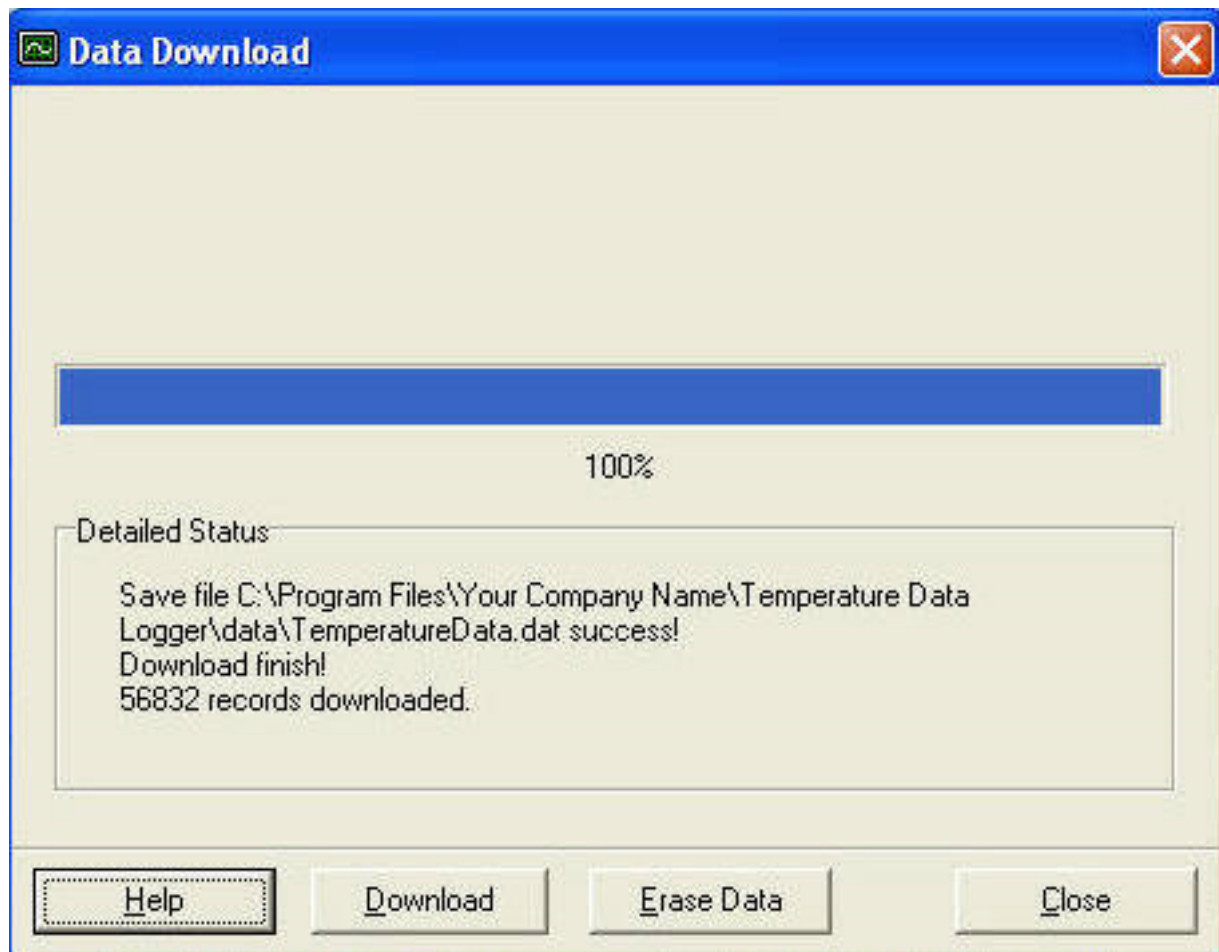
- Click Download to download the stored data.



- Click “Download” to start the download.

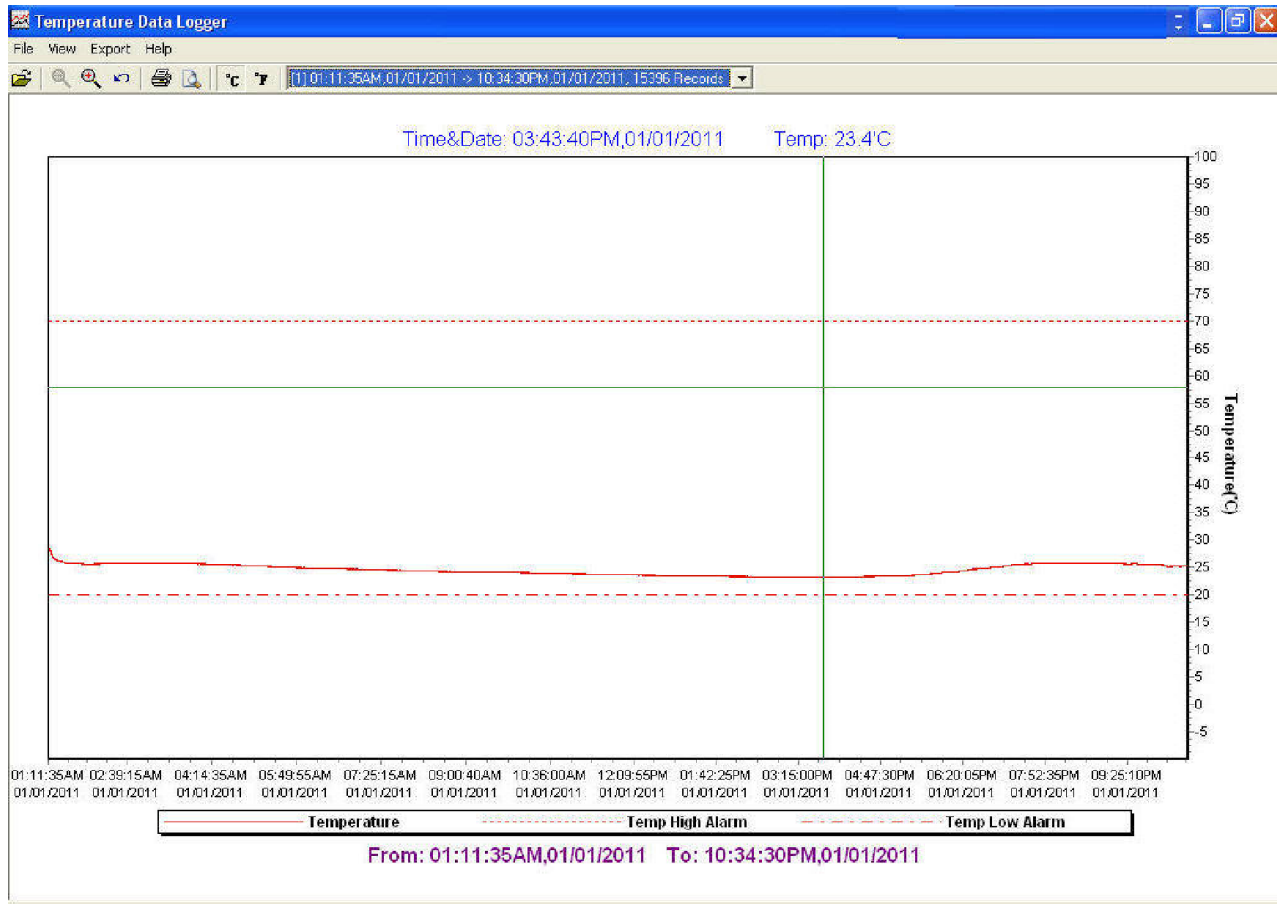


- Download Completed



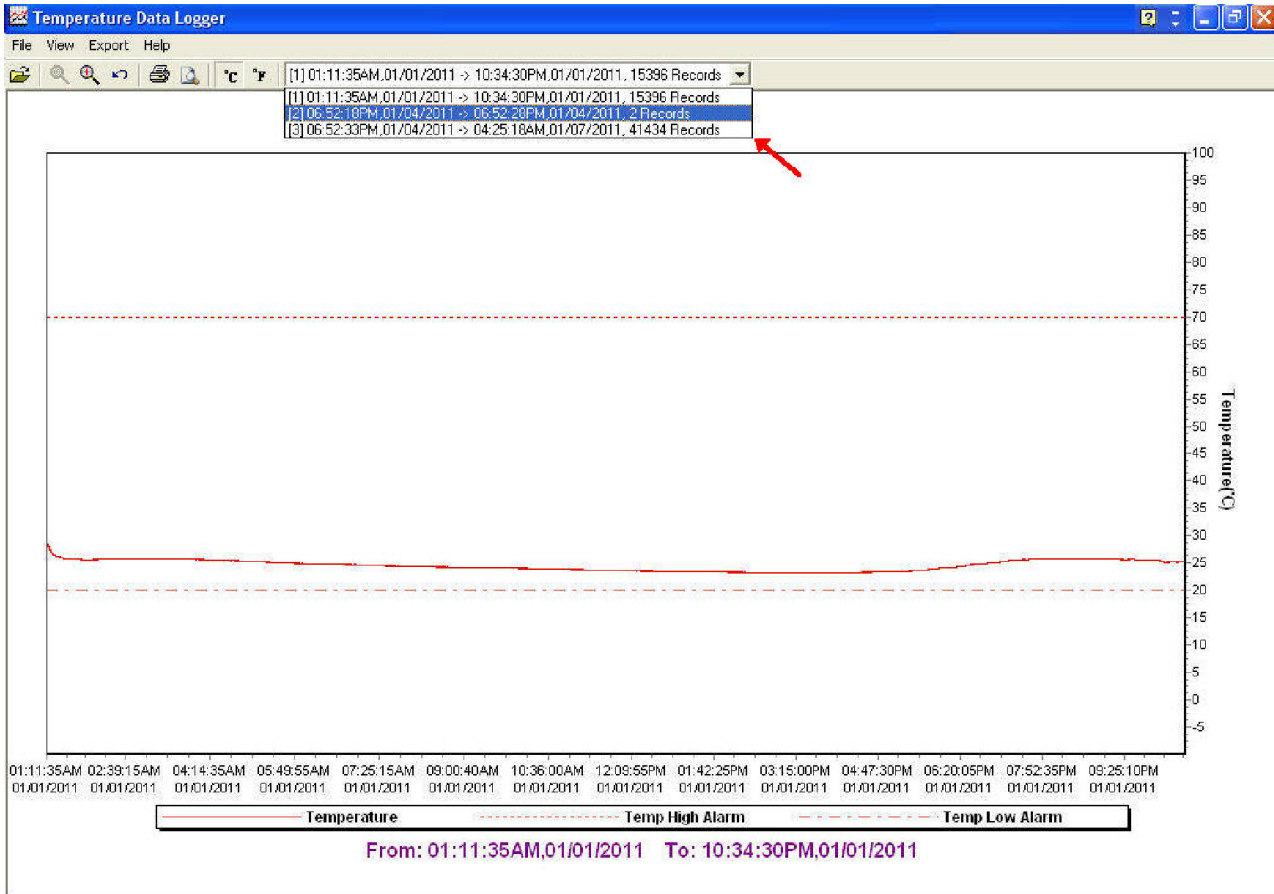
Graphic & Chart Analysis

Downloaded data will first be displayed in graph format.



Each data groups are listed according to the date of the sampling. Lowest group number represents earliest sampling date.

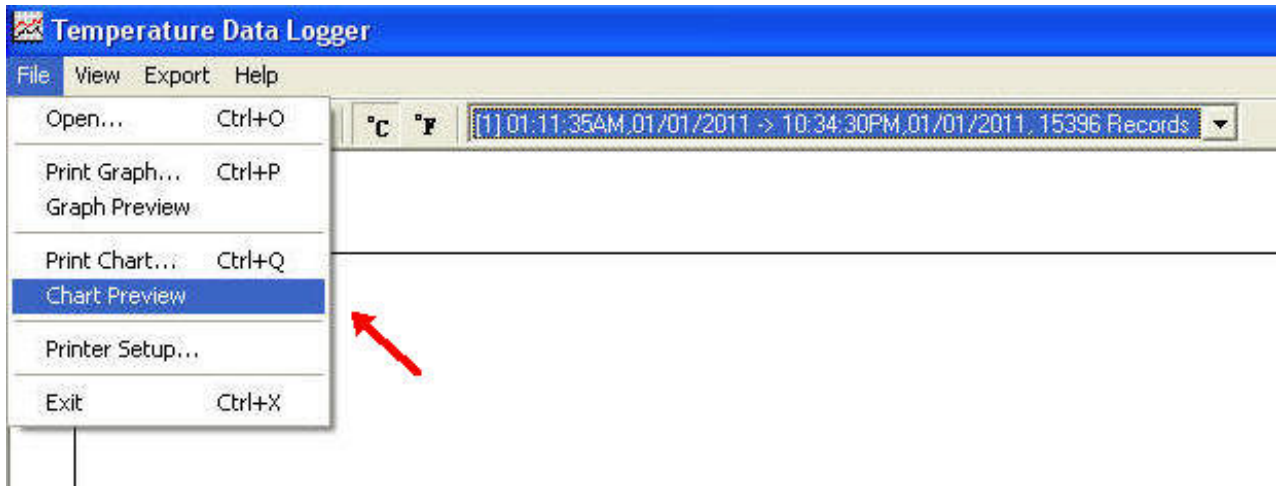
- [1] 03:54:53PM,05/01/2012 -> 02:54:13PM,05/02/2012, 16553 Records
- [1] 03:54:53PM,05/01/2012 -> 02:54:13PM,05/02/2012, 16553 Records
- [2] 04:26:01PM,05/02/2012 -> 03:12:36PM,05/04/2012, 33680 Records



Data in Listing Format

To display data in Listing format:

- Click File
- Click Chart Preview



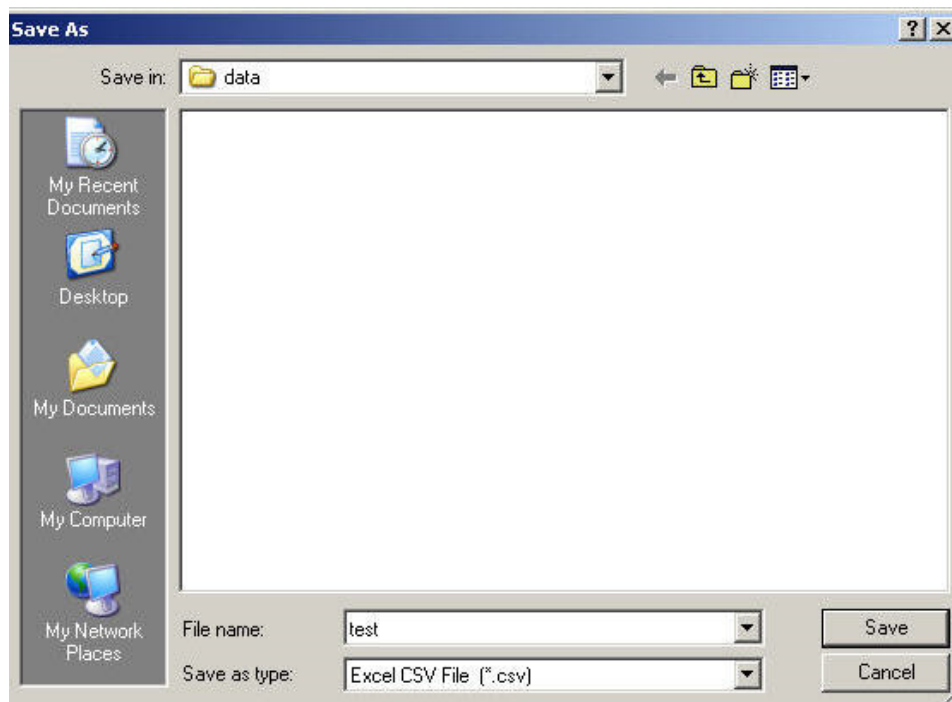
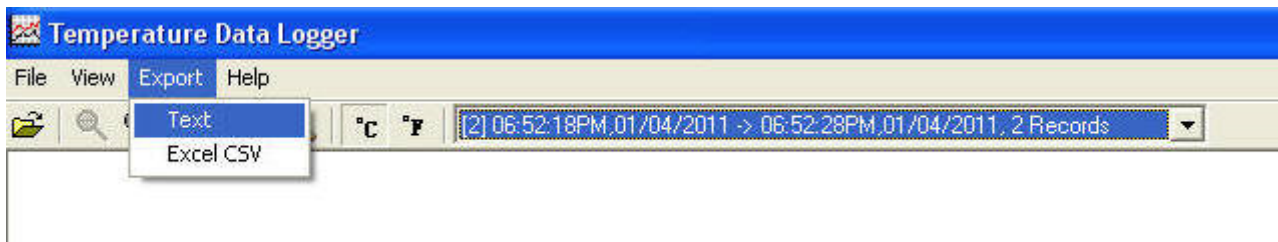
Data Listing Format

Product Name: Temperature Data Logger
Description: STLogger Record Data
Start Data&Time: 06:52:18PM,01/04/2011
End Data&Time: 06:52:28PM,01/04/2011
Interval: 10 seconds
Record Count: 2
Temp Alarm High: 70.0 'C
Temp Alarm Low: 20.0 'C

<u>No.</u>	<u>Time</u>	<u>Date</u>	<u>Temp('C)</u>	<u>Alarm</u>
1	06:52:18PM	01/04/2011	33.2	
2	06:52:28PM	01/04/2011	33.5	

Data Export

Select export data type: Text or Excel CSV.



Click Save to save the file in .CSV/Text format.



File Saved.